



Power Distribution Engineering Ltd.

A Theme Of Green  
Technology



**Head Office:** House-03, Road-16, Sector-11, Uttara, Dhaka-1230  
**Factory:** Khapara Road, (10 Tola Garment North Side) Tongi, Gazipur  
**Cell:** +8801715-900 610, +8801919-135 105   
**Email:** pdelgroup.bd16@gmail.com, **Web:** www.pdelgroup.com



## OVERVIEW

**Power Distribution Engineering Limited** is a young engineering company in Bangladesh. Professional experiences of its managers are well known in the market and help the company involving in prestigious engineering projects. Major portion of the workforce is engineer or engineering technician. Following years of experience of its workforce, company is now competent enough to undertake following responsibilities. Combined heat and power solutions, Balance of the plant equipment for various industries, Project engineering design and contracting, Industrial process automation, control Switchgear, panel, substation projects, Power transmission & distribution projects, Complete LED lighting solutions, Lift, Escalator, Supply, Installation.

## HISTORY

This Firm was registered in March 2010 in Bangladesh as a consultancy firm. This firm works to fulfill the requirements of Accord, Alliance, ILO etc. with a few years of experience this firm has already achieved success by the client's satisfaction.

## WE CARE

We are a professional company with a long-term vision providing comprehensive blend of services. We are committed to caring for our valuable people and clients.

## OUR ADDED VALUE

One stop service provider Well Experienced Management and technical team. Innovation supported by cooperation with technologically advanced and well experienced foreign partners.

## SAFETY VISION

Vision to eliminate all injuries, occupational illnesses, unsafe practices and incident of environmental harm from our operations. In doing so, achieve a work place where nobody gets hurt and everyone gets to go home safely and in good health.

## OUR MISSION

To provide insight and information to help our customers reduce risk and increasing efficiency in their most resource-intensive processes. We believe that prevention is better than cure & all our jobs are indicating that prevention most.

## OUR VISION

Vision has been and always will be to provide only the highest quality service, solution & product available anywhere. This commitment to quality is also reflected in our engineering and customer service operations where no short cuts are taken and long term customer satisfaction is of paramount importance. To give our customers a competitive edge with minimum risk & reduce unwanted downtime as an associates to keep on efficiently optimize their processes.





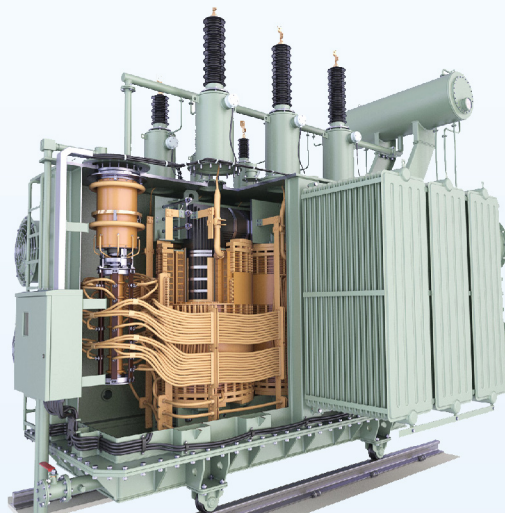
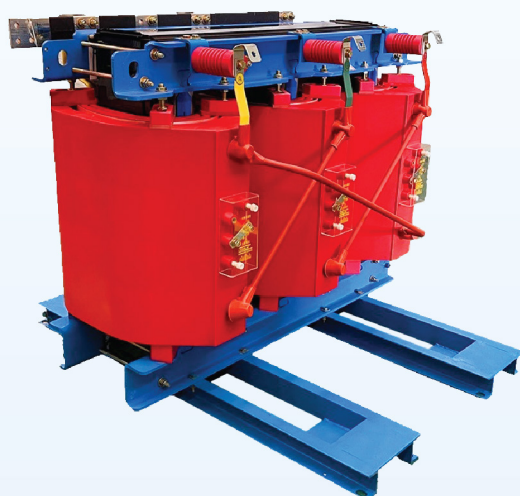
**Engr. Md. Moniruzzaman Khan**  
**Managing Director**

Engr. Md. Moniruzzaman Khan is the founder and Managing Director Of **Power Distribution Engineering Limited (PDEL)**. With his farseeing vision, excellent management skills, innovative ideas, incessant efforts and dynamic leadership, he leads the over-all functioning of the organization. Since 2009, he is in line with business. In 2009, he started contracting the work of different companies. Besides, he started various types of electric products business & electrical trading house business. In 2014 he started a Switchgear manufacturing company of name **Power Distribution Engineering Limited (PDEL)**.

During the period 2009 to 2020, he nurtured the company from a best Switchgear manufacturing Company in Bangladesh. The **PDEL**, with his courage and confidence, **Md. Moniruzzaman Khan** turned a small business into one of the best engineering conglomerates in Bangladesh. Since then the company has seen an immense growth rate.



PDEL manufactured Distribution Transformer, Power Transformer, Special Transformer are energy efficient, environment friendly, slim, cost effective and ensures low loss.



## Our Remarkable Features:

- Compact, Low maintenance designs that are built for trouble-free operation.
- Laser-Grade type high efficient tank design.
- High reliability for lifetime.
- Greater Value for Money.
- Quick Delivery.
- Long warranty period.

STANDARDS : IEC-76, BS-171, ANSI C57.12, VDE 0537  
 FREQUENCY : 50 Hz, on request 60 Hz  
 RATINGS : For ratings higher than 50 MV A please consult us  
 PRIMARY VOLTAGE : For values above 24 kV and up to 36 kV please consult us.  
 Double high voltages (example 15-20 kV) can be offered  
 STANDARD TAPPINGS :  $\pm 2.5\%$ ;  $\pm 5\%$  or  $\pm 2 \times 2.5\%$ ;  $-7.5\%$  and others on request  
 SECONDARY VOLTAGE : 400 to 433 V other values may be offered.  
 Double low voltages with 7 LV bushings can be offered with full rating  
 on both voltages or with reduced rating (75%) on lowest voltage



## Technical Information Of Transformer

**11/0.415 KV, 3 PHASE, 50 HZ**

Rated Power Model No.	(KVA)	50	100	150	200	250	315	400	500	630	750	800	1000	1250	1600	2000	2500	3000
		FCNI50	FCNI100	FCNI150	FCNI200	FCNI250	FCNI315	FCNI400	FCNI500	FCNI630	FCNI750	FCNI800	FPYI1000	FPYI1250	FPYI1600	FPYI2000	FPYI2500	FPYI3000
NO Load loss	(W)	153	234	330	360	450	540	630	720	900	945	990	1170	1350	1620	1845	2250	2890
Load loss at 75°C	(W)	810	1350	1800	2520	2610	2970	3330	4230	5400	6300	6500	8100	9450	11700	13500	17100	24300
Imped.vol at 15°C	(%)	4	4	4	4	4	4.5	4.5	4.5	6	6	6	6	6	6	6	6	6
Regulation at p.f=1	(%)	1.75	1.41	1.3	1.10	1.08	1.04	0.987	0.941	0.987	0.9	1.03	1.00	0.98	0.95	0.93	0.90	0.83
Regulation at p.f=0.8	(%)	3.54	3.36	3.29	3.17	3.16	3.41	3.37	3.34	4.2364	4.27	4.33	4.31	4.30	4.28	4.26	4.24	4.23
Efficiency at p.f=1	At load 100%	(%)	98.00	98.42	98.6	98.79	98.81	98.89	98.95	99.00	99.05	99.04	99.03	99.06	99.09	99.12	99.15	99.19
	At load 75%	(%)	98.31	98.68	98.82	98.98	99.00	99.06	99.12	99.16	99.20	99.21	99.20	99.23	99.25	99.28	99.31	99.34
	At load 50%	(%)	98.52	98.85	98.98	99.11	99.13	99.29	99.23	99.27	99.31	99.34	99.33	99.35	99.38	99.40	99.43	99.46
	At load 25%	(%)	98.30	98.71	98.83	98.98	99.02	99.08	99.13	99.17	99.22	99.31	99.29	99.32	99.36	99.39	99.42	99.46
Efficiency at p.f=0.8	At load 100%	(%)	97.50	98.03	98.26	98.48	98.51	98.61	98.68	98.75	99.81	98.8	98.78	98.83	98.86	98.90	98.94	98.99
	At load 75%	(%)	97.89	98.34	98.53	98.72	98.75	98.83	98.98	99.95	99.00	99.01	99.00	99.03	99.07	99.10	99.13	99.17
	At load 50%	(%)	98.15	98.56	98.72	98.88	98.91	98.98	99.04	98.09	99.13	99.18	99.16	98.19	99.23	99.25	99.29	99.32
	At load 25%	(%)	97.88	98.38	98.55	98.73	98.77	98.85	98.91	98.97	99.02	99.14	99.12	99.15	99.21	99.24	99.28	99.32





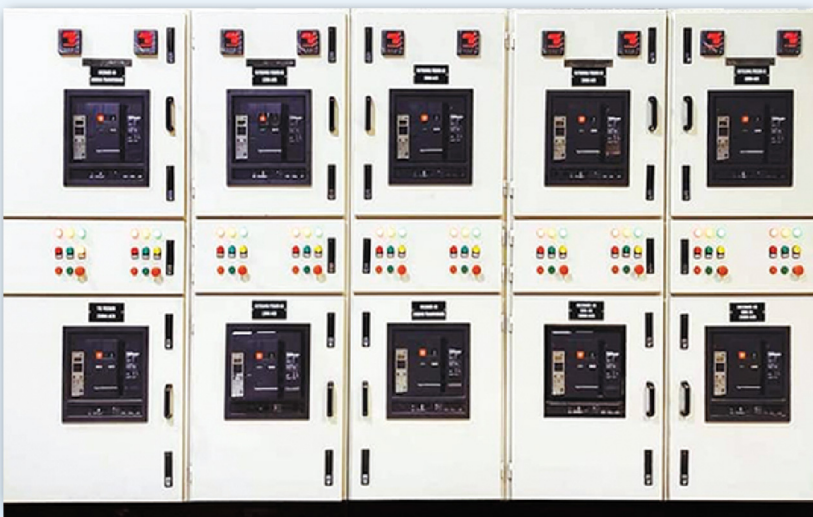
**HT Panel (VCB)**



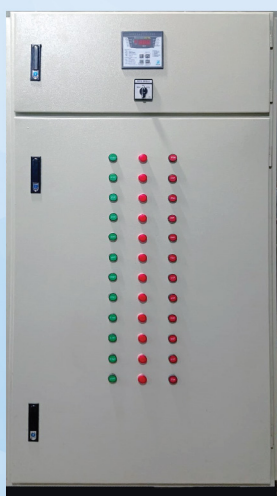
**Synchronization Panel**



**Mechanical Interlock**



**ACB Panel**



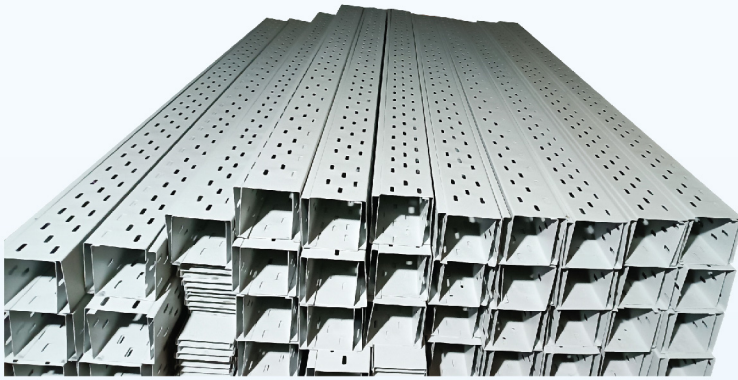
**PFI Panel**



**BBT System**



## Cable Tray



## Generator



## Racking System





## Component



**VCB**



**ACB**



**ABB MCCB**



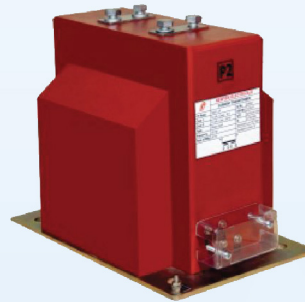
**Magnetic Contactor**



**Energy Meter**



**11 kv PT**

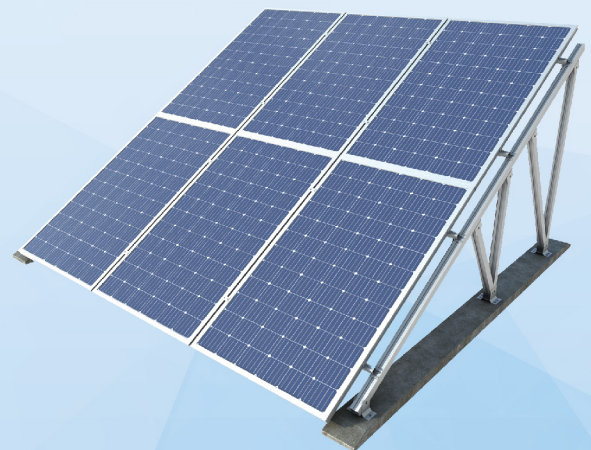


**11 kv CT**



**Capacitor**

## Solar System



## TYPES OF OPERATION AND ACTIVITIES

- Sub-Station (Sales & Service)
- Total Electrical Solution.
- HT, LT, Switchgear, PFI Plant, MDB, SDB, Change Over Switch.
- Cable Tray, Supply & Installation.
- All Industrial Electrification of factory Building etc.
- Busbar Trunking System (BBT) Supply & Installation.
- All Kinds of Electrical Goods Supply.
- Generator Sales & Service.
- Solar System

## OTHER CONCERN



**ABB Component Product Ready Stock Available**

## OUR GLOBAL PARTNER



**Head Office:** House-03, Road-16, Sector-11, Uttara, Dhaka-1230  
**Factory:** Khapara Road, (10 Tola Garment North Side) Tongi, Gazipur  
**Cell:** +8801715-900 610, +8801919-135 105   
**Email:** pdelgroup.bd16@gmail.com, **Web:** www.pdelgroup.com